

Newly renovated apartment for rent at Finse

150 square meters over 2 floors

5 bedrooms – 7 single beds and 7 double beds

2 bathrooms and sauna

Kitchen with all required utensils

Storage rooms for skis and equipment

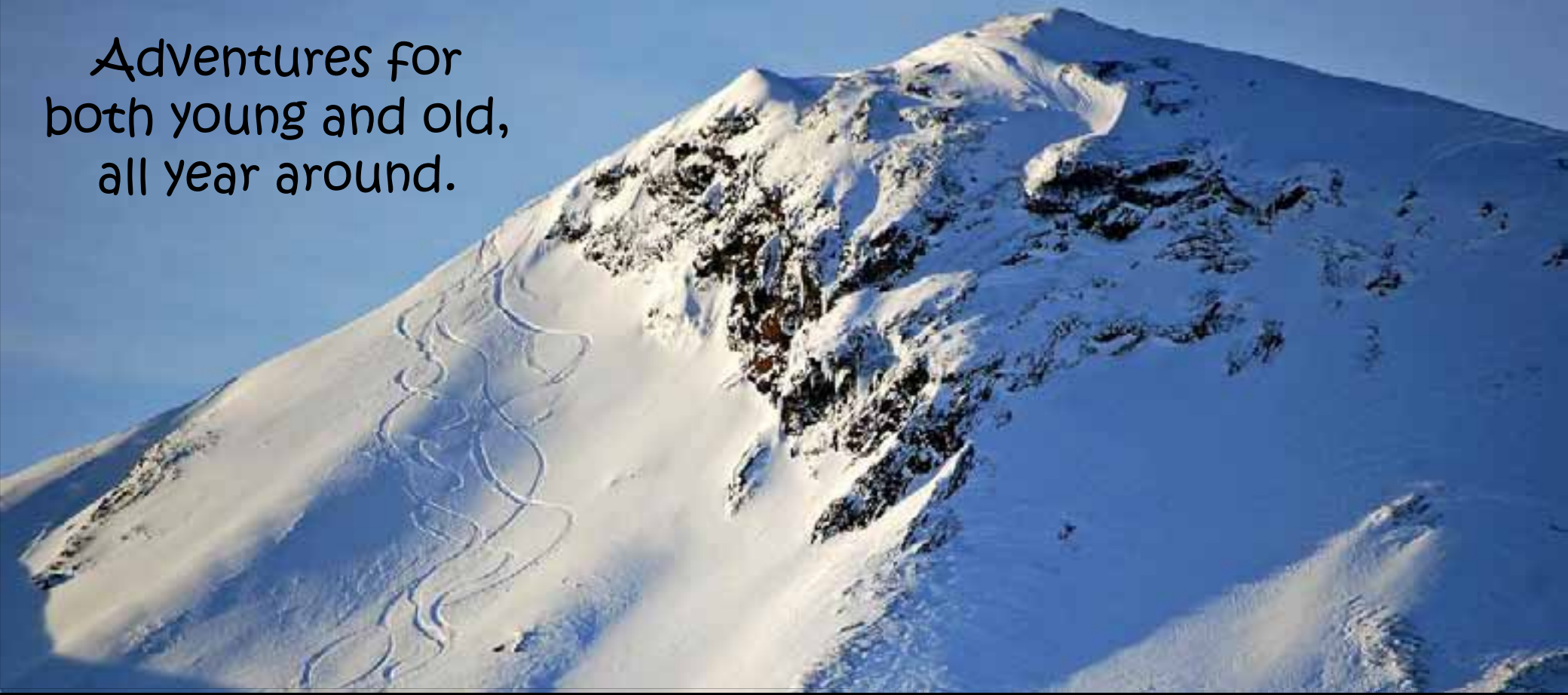
Located 100 meters from the railway station/hotel

Max capacity; 16-18 persons

Finse (1222 m.a.s.l), placed in the midst of the Hardangerviddan mountain plateau, in between two National Parks, is remote, yet easily reached by train. Train gets you there in approximately 2 hours from Bergen or 4 hours from Oslo.



Adventures for
both young and old,
all year around.







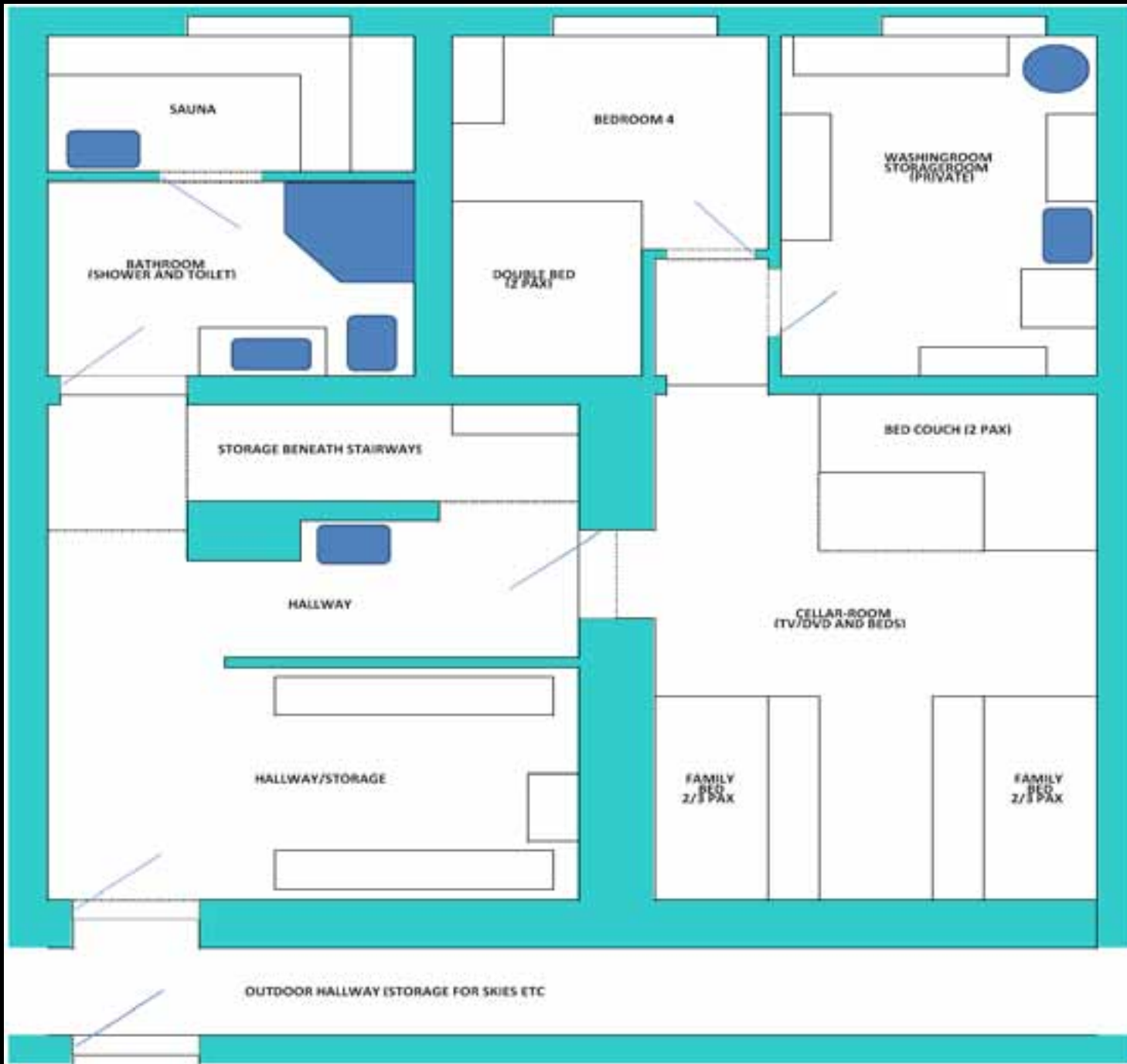
First floor











Ground floor









For more information about the apartment, prics and availability, mail or call us on:

Erik Christopher Reinskou; creinskou@hotmail.com +47 95726761

Merete Aarskog; merete@finse1222.no +47 40856882